



J&L Garden Center

The All Season Gift
and Garden Center

620 North 500 West Bountiful, Utah 292-0421

www.JLGardenCenter.com

Fresh-cut Christmas Trees

Fresh-cut Christmas trees need special care if they are to remain fresh until Christmas Day. I am sure you have had the experience, just like myself and many other people, that your tree dries out and falls apart just before Christmas. Not only is this experience a hassle, but it is also a fire hazard!

Ideally, **Fresh-cut Christmas trees** should only be kept inside the house for two or three weeks. Many people want to have their tree decorated from Thanksgiving Day until New Years Day. Unfortunately fresh-cut Christmas trees just can't always last that long inside a warm house. However, with the proper care, you can extend the life of your tree, enjoy your tree the entire Christmas season, and decrease the fire hazard of your fresh-cut Christmas tree.



Keep Your Christmas Tree Fresh

1. Test for freshness when you buy your tree. Lift your tree a few inches off the ground and drop it. It is natural for inside needles to fall but the outside needles should remain on the tree. Also, bend a few of the outside needles. Fresh needles should bend rather than break.



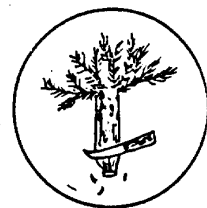
2. Cut one inch off of the base of your tree and put your tree in a bucket of warm water immediately. If you wait more than fifteen minutes, you should make a new cut before setting your tree in water. There are many additives you can add to water to help the tree continue to absorb water: both homemade and commercially prepared. Some people add Karo Syrup or Iron Chelate to help the tree stay green longer. Still other people use Aspirin, Chlorox, or Sprite to help their trees stay fresh. If your system works, use it.



3. Use a water stand. Never leave your tree on a wooden stand. Always put your tree in a water stand. Wash your water stand with a good disinfectant before using it each year. Bacteria left in the water stand can make the water bad, and prevent the tree from absorbing as much water as it could have. Keep water in the stand at all times. A tree can use up to a gallon or two of water a day! If your tree stand runs out of water you must make a new "one inch cut" before the tree will absorb more water. This is also true for flocked trees. **Remember;** cut 1" off the base of your tree.



4. Do not cut bark off the tree to make it fit into your tree stand. Removing the bark prevents the tree from absorbing water as readily. Use a larger tree stand if the trunk is too large to fit in the stand properly.



5. Always use miniature lights. Miniature lights do not produce as much heat as other lights. Do not leave the tree lights on when you are not at home, or when you are in another room. More Christmas Trees catch on fire because of the lights than for any other reason. Regular Christmas lights (C9 and C7 type) produce too much heat and may dry out your tree in a matter of a week or two. Treat your tree like you would take care of a cut flower arrangement.



6. Never, never have a fire in the same room as a Christmas Tree. You would be amazed to find out how much moisture is absorbed from the air by a fire. This is true both from a fireplace and from a wood burning stove. **Also, keep your tree out of the draft from your furnace.** A furnace draft can dry out a tree in a matter of just a few days.



7. Spray your tree with "Wilt Prufe". Wilt Prufe seals moisture in the tree's needles so that water cannot evaporate from them. You can help your tree stay fresh up to one full week longer just by using this material. Spray all your fresh-cut wreaths and garlands also.



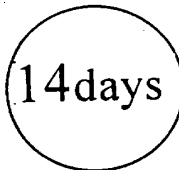
Potted Christmas Trees

You can enjoy a potted tree inside for Christmas and then plant it outside after Christmas: instead of just throwing your tree away. **Colorado Spruce** seems to be the favorite tree for this purpose, however, **Austrian Pine and Scotch Pine** are just as nice as a potted Christmas tree. **For the best results follow these simple guidelines.**



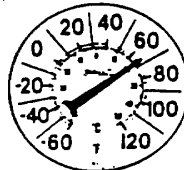
1. Keep your tree inside the house 10 to 14 days.

After 10 days the tree thinks it is spring and starts to grow, making it less hardy when you put it back outside for the winter.



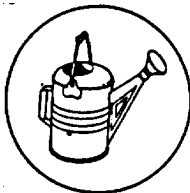
2. Keep your tree as cool as possible while inside the house.

Use miniature lights to decorate your tree. Regular Christmas lights (C9 and C7 type) produce too much heat. Do not have the tree near a heat vent or fireplace.



3. Water your tree thoroughly every two or three days.

Don't be surprised if the tree uses 1 or 2 gallons of water each time you water. The longer your tree is in the house the more water it will need each time you water. Keep the root-ball moist but do not let it constantly sit in water. Water your tree thoroughly just after you put it back outside. Water your tree occasionally all winter to keep it from drying out before you can plant it. Putting snow on the root ball is an excellent way to water a tree when it is outside.



4. Spray your tree with Wilt Prufe just before

you bring the tree inside and repeat the spray when you take the tree back outside. Wilt Prufe seals moisture inside the tree's needles. Make sure the Wilt Prufe spray will have time to dry before the temperature drops below freezing.



5. Protect your tree for a week or two after you

take it back outside. Place it next to the house or in an unheated shed for a week or two. Remember, the tree started to think it was spring with the nice 70 degree weather. Don't just put your tree back out into the extreme cold without some protection. After a week or two of protection you can go ahead and plant your tree in the yard.



Wilt Prufe

Wilt Prufe is an excellent spray to help prevent all trees and shrubs in your yard, and especially Christmas trees, from dehydrating. **Wilt Prufe** helps seal moisture inside the plant. To get the best results from using **Wilt Prufe**, make sure the tree's needles are moist (both inside and outside the plant) before spraying them. Water the tree well a day in advance and mist the needles an hour before spraying. Make sure the temperature is above 40 degrees and will stay above freezing until the spray dries, approximately one to two hours.



We recommend that you spray Wilt Prufe just before you take your tree inside.

Wilt Prufe is available in aerosol cans and in Ready-to-use trigger sprayers for easy home use. Wilt prufe is also available in a concentrated formula. The concentrate is available in pints, quarts, and gallons.

Fresh-cut Christmas Tree Guarantee

We guarantee our fresh-cut Christmas trees until Christmas Day; if the tree is placed in a water stand and if you take reasonable care to follow the guidelines listed in this handout. If a Christmas tree dries out before Christmas Day, bring your tree back to J&L to receive a new tree, of comparable price, at no charge.



If we delivered your Christmas tree to your home we will deliver another tree to your home at no additional charge, but you must come to the garden center to pick out another tree. Because of the seasonal and unpredictable nature of Christmas trees no refunds will be made. No allowances are made for decorating or undecorating trees. J&L assumes no liability for any damage caused by Christmas trees due to needle drop, sap dripping, or from fire damage.

Potted Christmas Tree Guarantee

J&L guarantees all potted Christmas trees to be in good growing condition at the time of purchase. Because of the special needs and requirements of potted Christmas trees, our guarantee ends Christmas Day. No guarantee is provided in the spring for any potted Christmas Tree.

